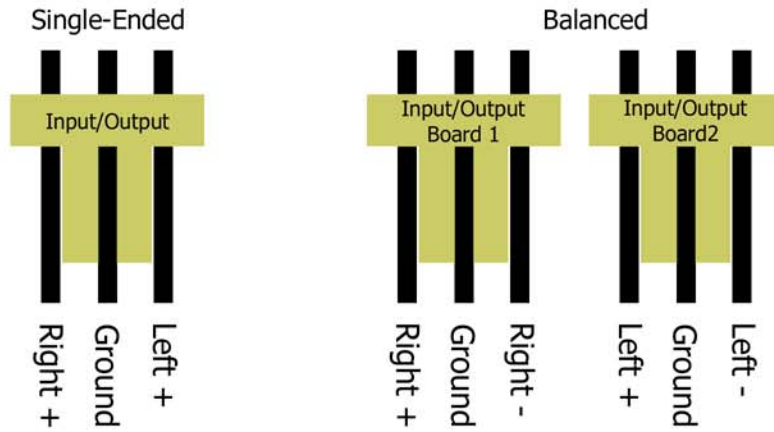


Input and Output Headers



Loop Header

Same pin arrangement as Input/Output connectors.

Top row is Output to loop
Bottom row is Input from loop

If loop is not needed, use supplied shunt jumpers:



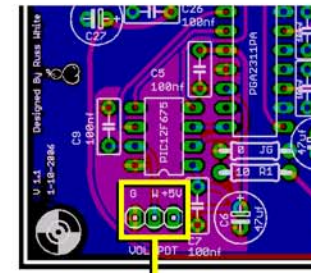
Power Connections

The Darwin requires a +5VDC power supply.

+5V is run to the relay board, and Ground connects to the two rotary switch common connections. When a position is selected with one of the switches, the ground connection is made to the appropriate relay, switching it on.

Power can be taken from any reliable, stable 5VDC supply. Very little current is needed (60mA MAX per relay board). If you are using a Twisted Pear Audio Kookaburra preamp or Joshua Tree attenuator, it is very easy to tap into their 5V supplies.

Power from the Kookaburra

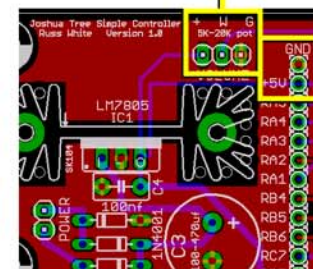


Either solder to the back of the PC Board or to the pins of the potentiometer.

Use the G (Ground) and +5V pins.

Power from the Joshua Tree

Either use the +5V and GND pins on the potentiometer...



...or the +5V and GND taps on the PC Board